

Subversive Installation Instructions

Table of Content

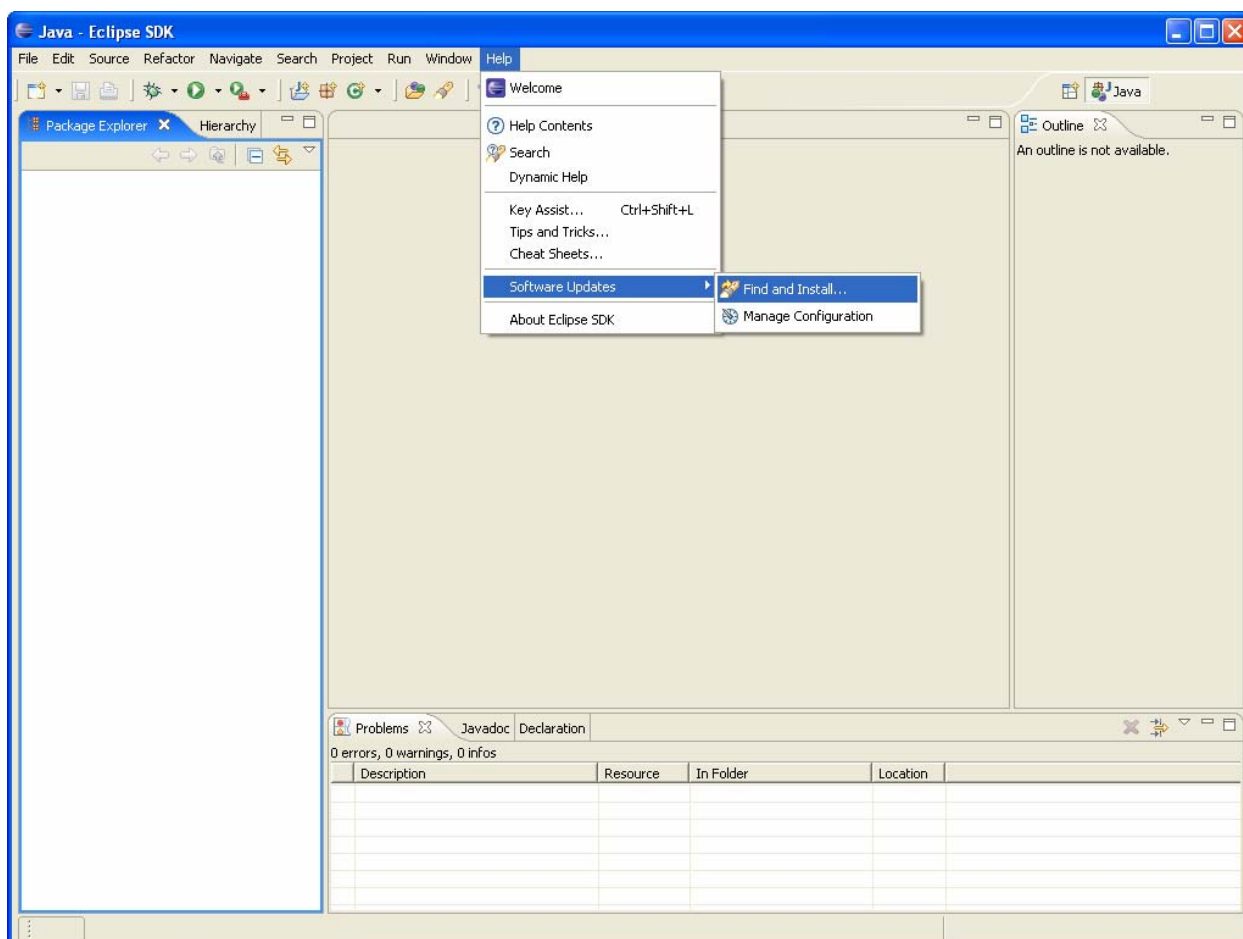
How to Install.....	1
How to Update.....	7
How to Manage.....	8

This document will guide through Subversive installation process using Eclipse Software Updates feature. Standard Eclipse Software Updates feature is aimed to help users with installing new plug-ins.

How to Install

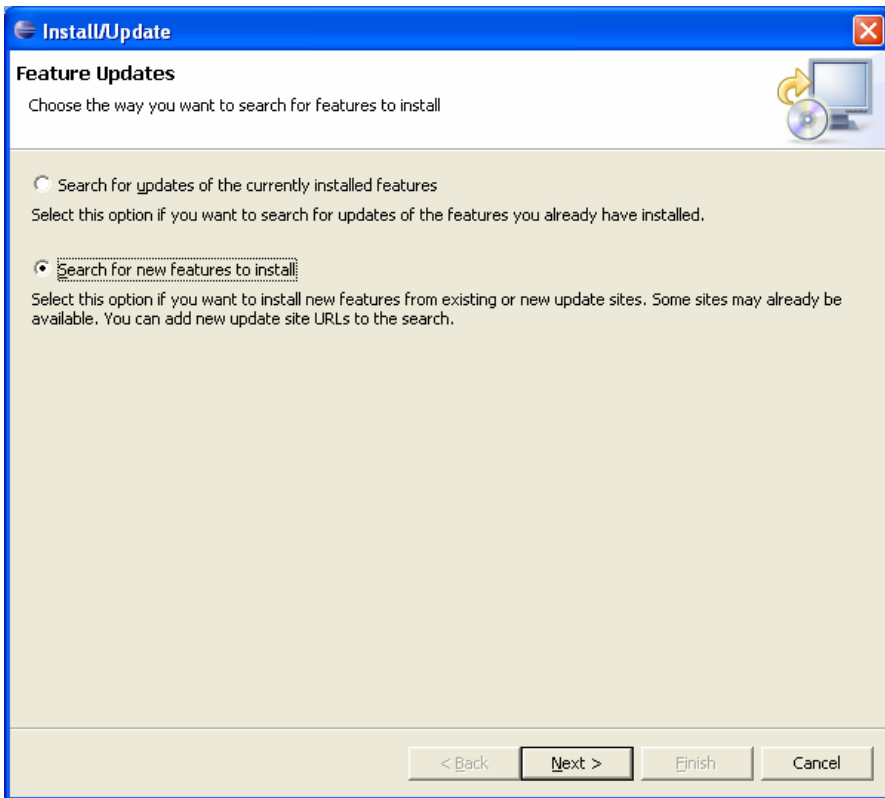
Step 1

In order to start installation process select menu item **Software Updates > Find and Install...**



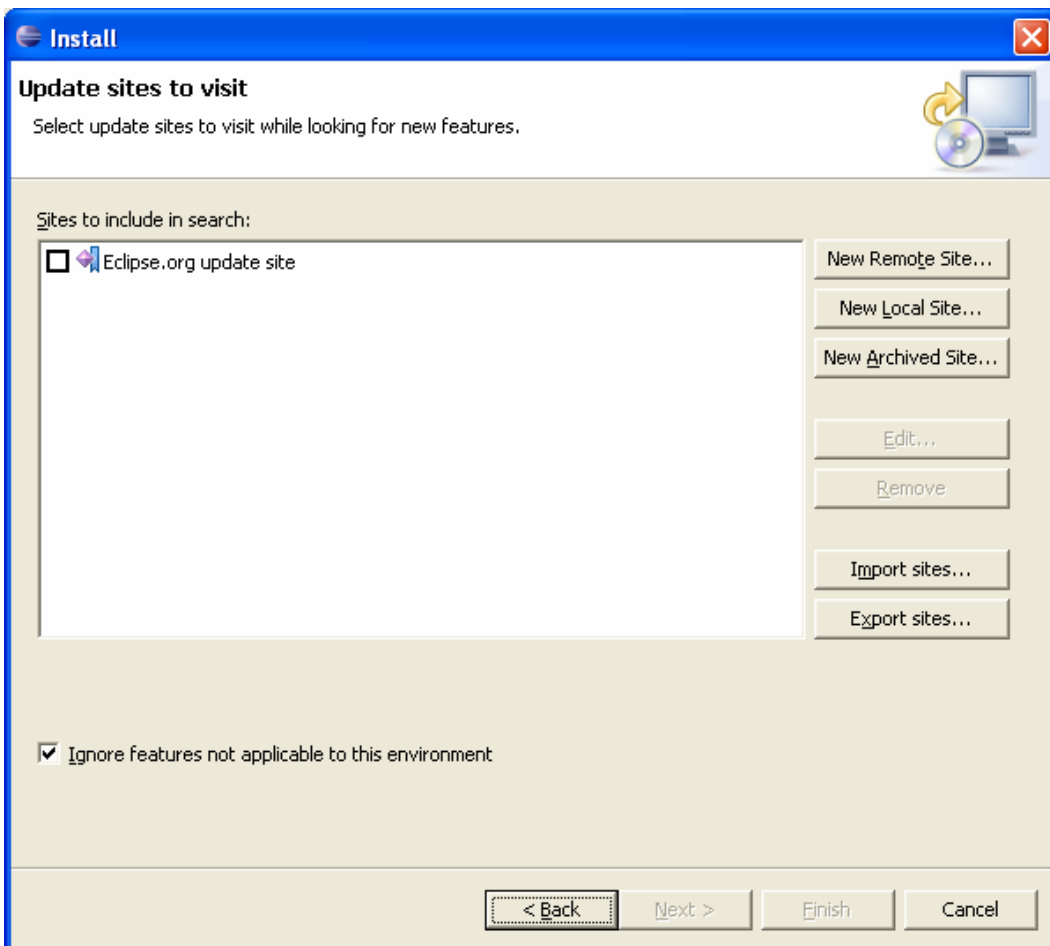
Step 2

In the **Install/Update** wizard select **Search for new features to install** option and click **Next** button.



Step 3

Install window appears. This window contains the list of update sites. Subversive has own update site, so we need to add it to the list. In order to do it you should click on the **New Remote Site...** button.



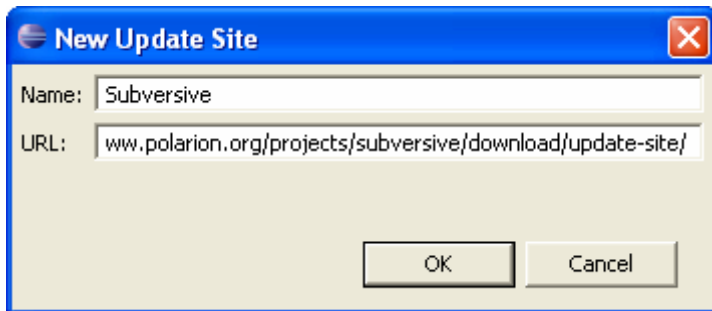
Step 4

In the **New Update Site** window you should enter the name of update site and the URL. Please use following:

Name: Subversive

URL (for Subversive 1.0.x): <http://www.polarion.org/projects/subversive/download/update-site/>

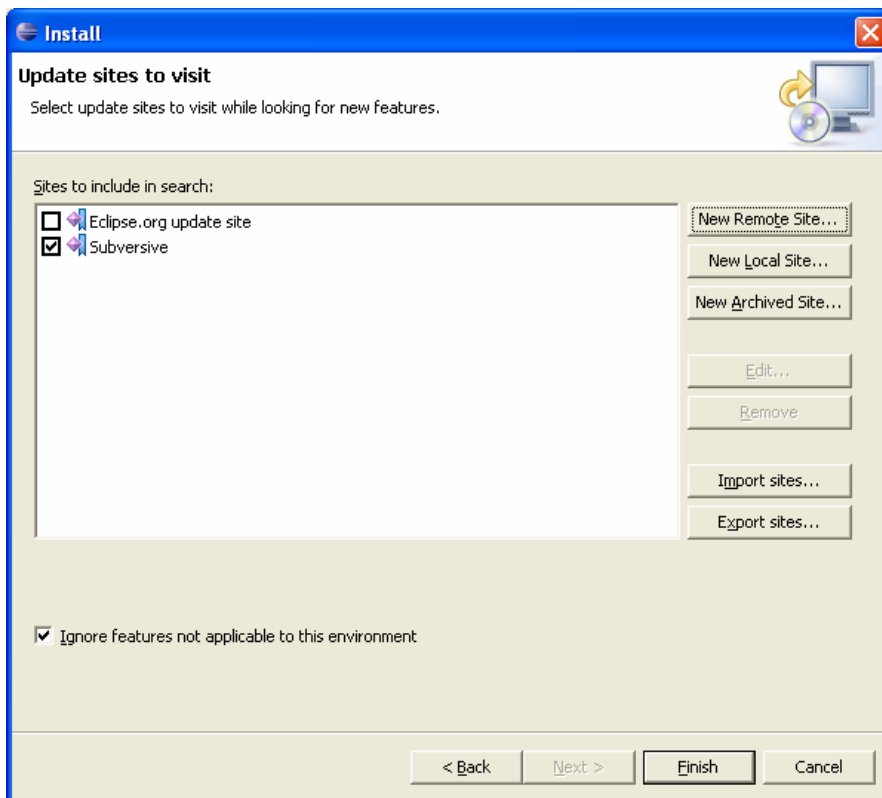
URL (for Subversive 1.1.x): <http://www.polarion.org/projects/subversive/download/1.1/update-site/>



Step 5

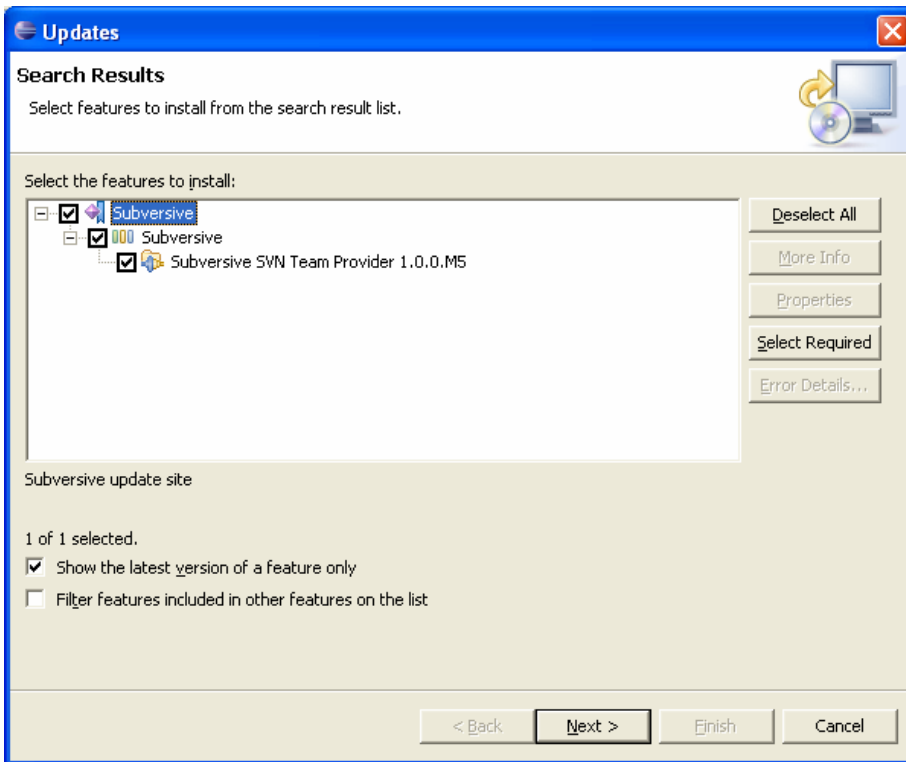
We should point Eclipse Update Manager to the update site where changes should be checked. In the list of the update sites you should select **Subversive** and click **Finish** button.

If remote update site is not accessible by some reason, you are able to download Archived Update Site distribution and install it.



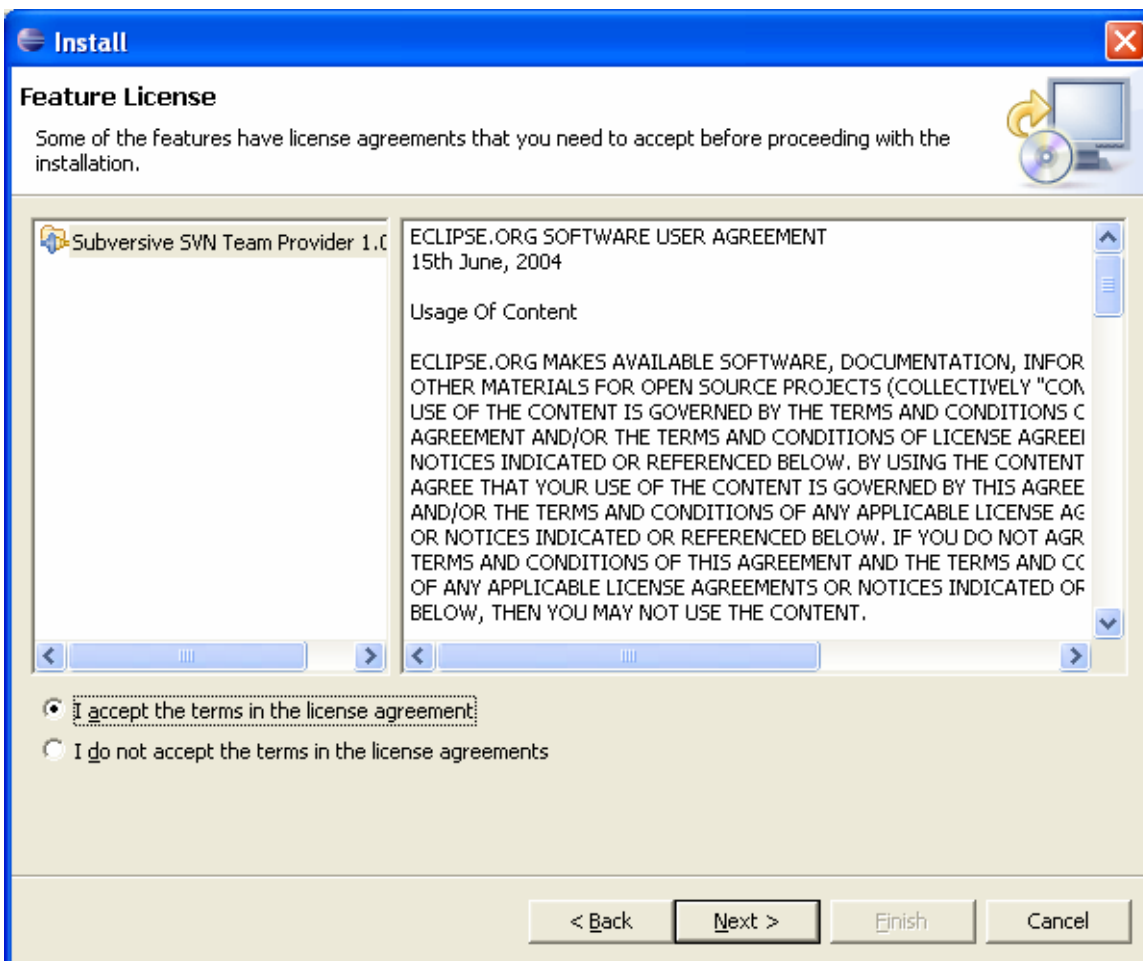
Step 6

Eclipse checks selected update site and shows the list of available features. You should expand the tree and select required version of Subversive. Click **Next** button in order to continue installation process.



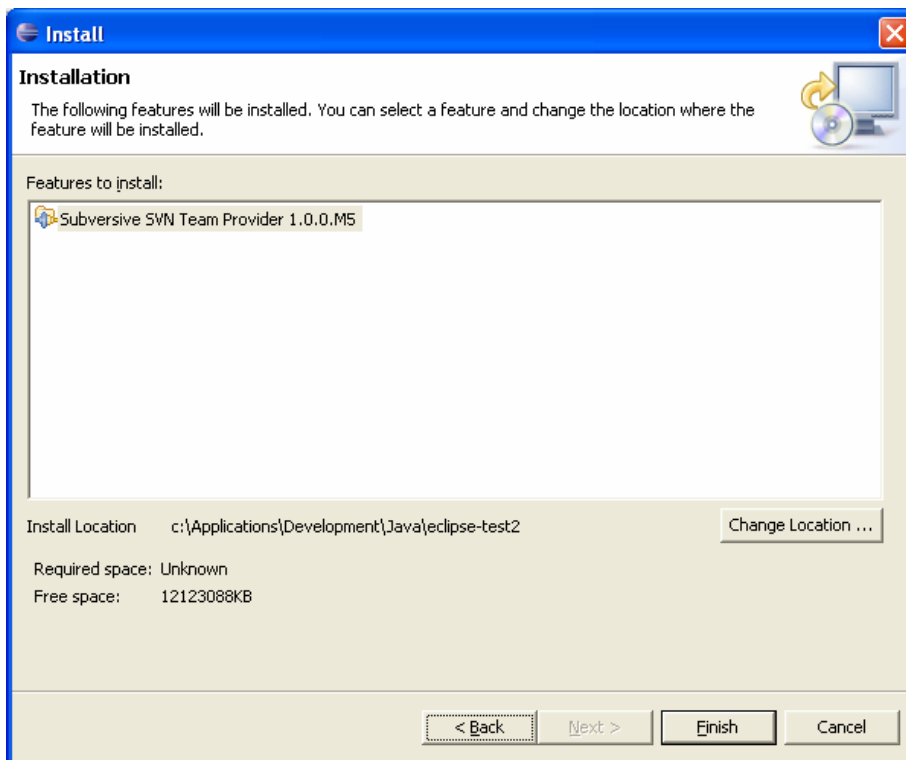
Step 7

License agreement for selected features is shown. You should accept terms of agreement and click on the **Next** button.



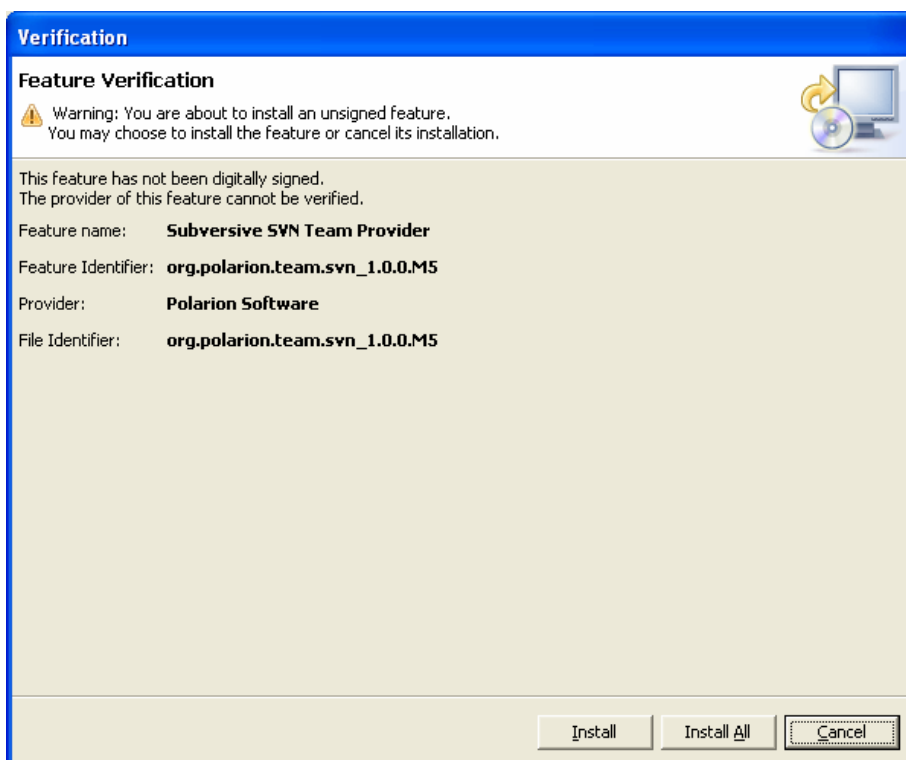
Step 8

Install window shows the list of selected features to install. Click on **Finish** button in order to proceed to download process.



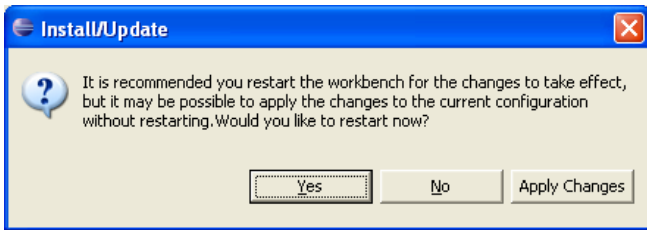
Step 9

After downloading you should confirm installation. Press **Install All** button in order to confirm and install downloaded features.



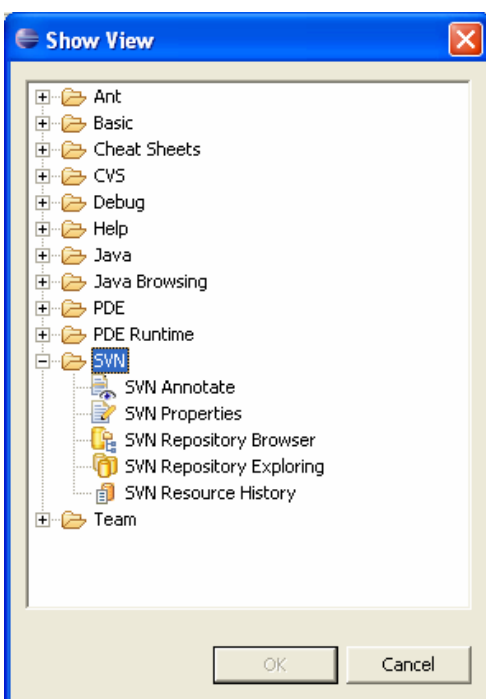
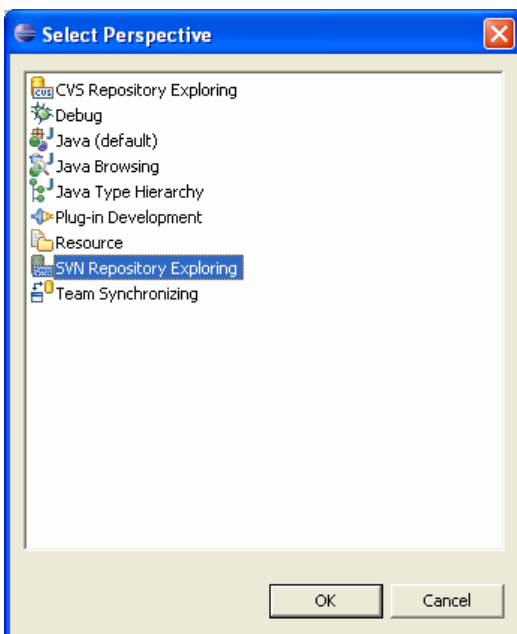
Step 10

After installation Eclipse should be restarted. Click on **Yes** button.



Step 11

After restart you are able to start use Subversive. You can find Subversive perspective and views in correspondent dialogs, activated by menu items **Window > Open Perspective > Other...** and **Window > Show View > Other...**

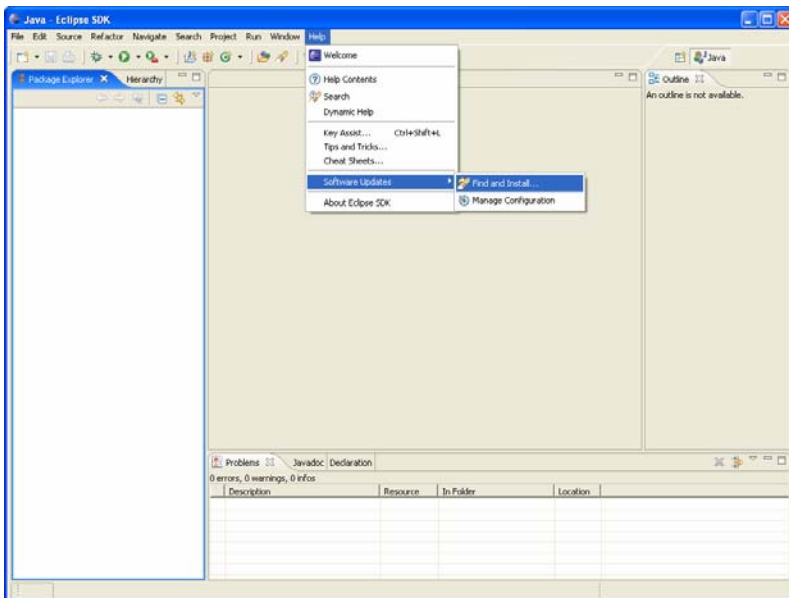


How to Update

There are two different approaches. One of the approaches is described in this section. Another approach you can find in the next section.

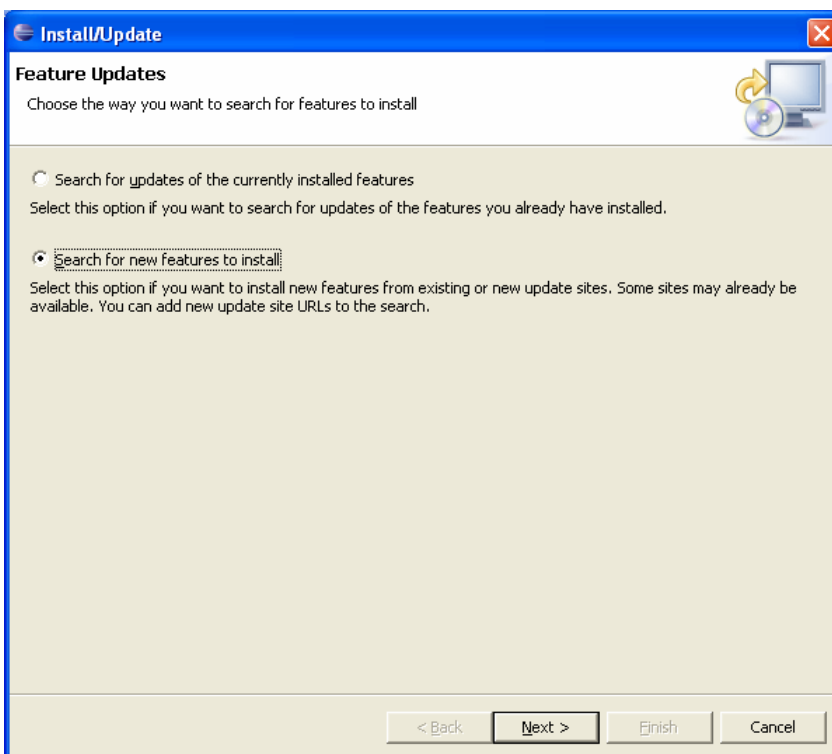
Step 1

Select menu item **Software Updates > Find and Install...**



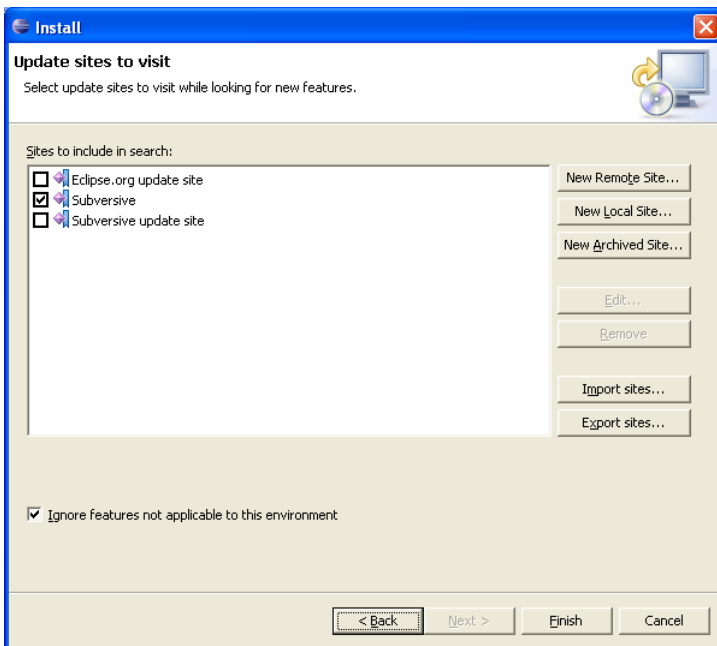
Step 2

In the **Install/Update** wizard select **Search for new features to install** option and click on **Next** button.



Step 3

In the list of available update sites select Subversive and click on **Next** button.



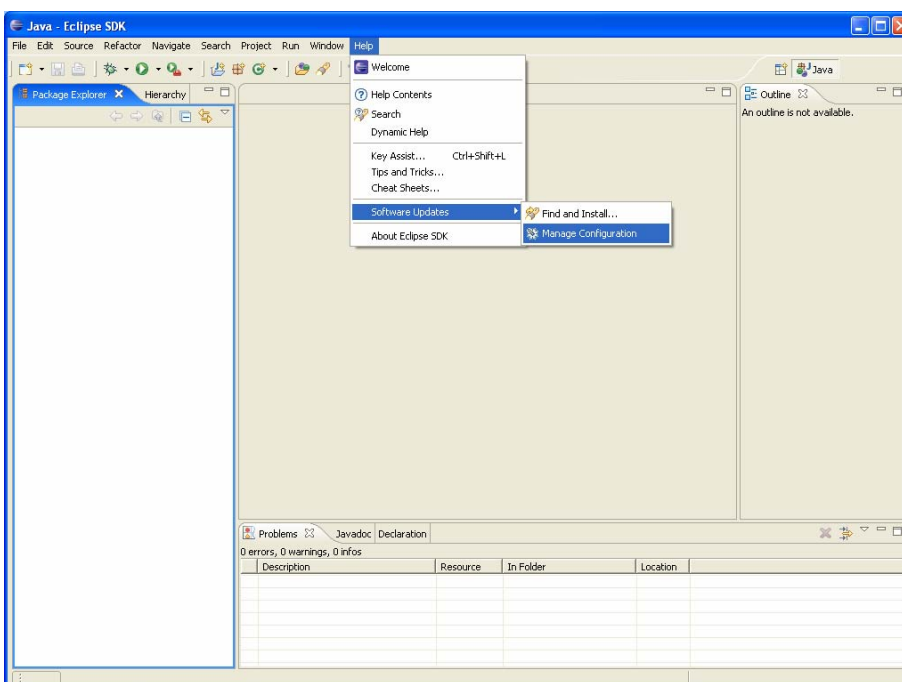
Step 4 – Step 11

The same as in How to Install section.

How to Manage

Step 1

After feature installation you are able to manage it. In order to access to management options select menu item **Help > Software Updates > Manage Configuration**



Step 2

Select the Subversive plugin in the tree. The list of available management options is shown at the right side. Choose required option.

